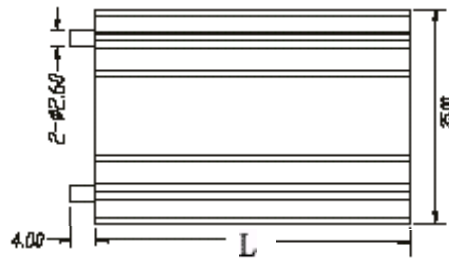
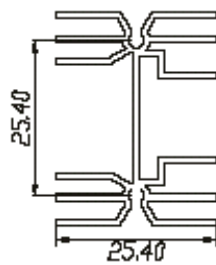
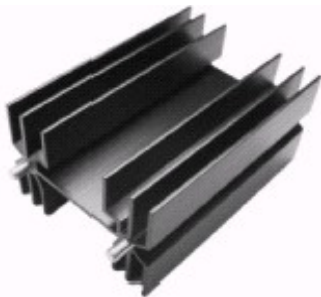
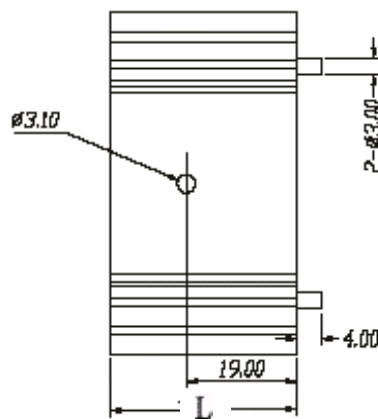
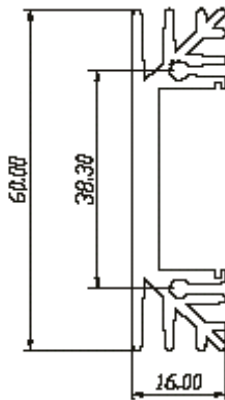
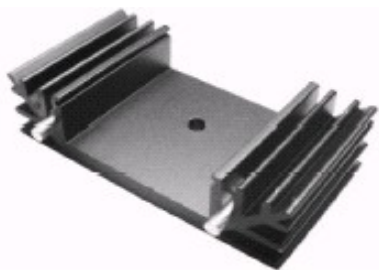


TO-218, 220, TO3P EXTRUDED HEATSINK

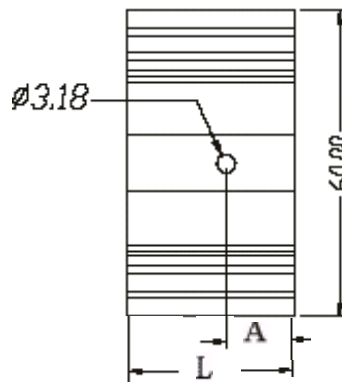
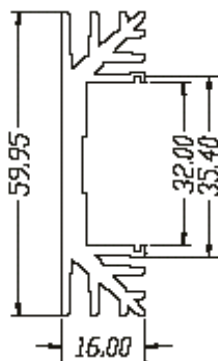
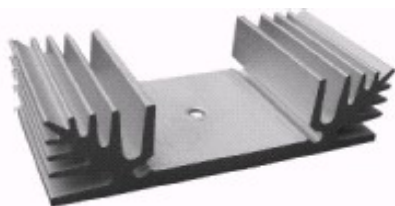


* Clip available, order code for clip is:
3901M000

PART NO	"L"	HOLE
1076A201	38.0	NO
1850A201	50.0	NO
1863A201	63.0	NO
1738A201	38.0	YES
1750A201	50.0	YES



PART NO	"L"
4374A230	38.0
4375A230	50.0

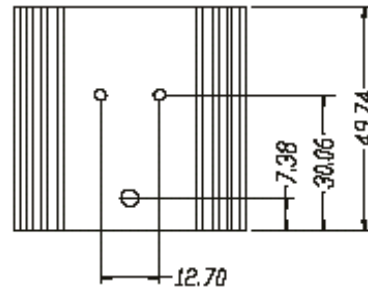
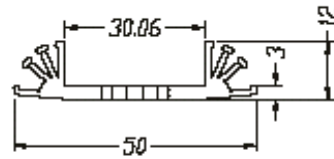


PART NO	"L"	"A"
1532A000	32.00	13.00
1570A000	70.00	19.00

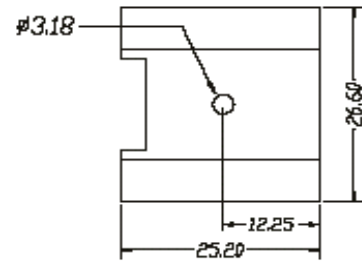
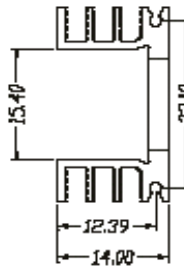
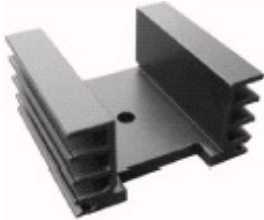
TO-218, 220, TO3P EXTRUDED HEATSINK



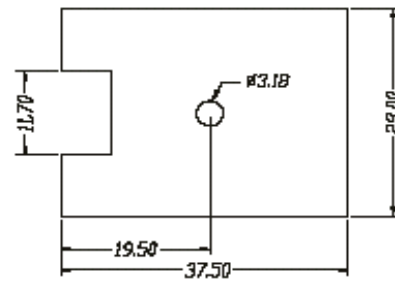
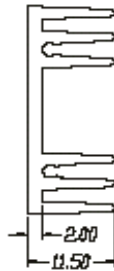
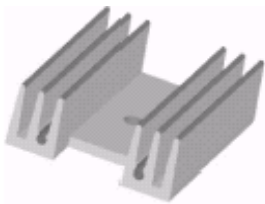
1220A000



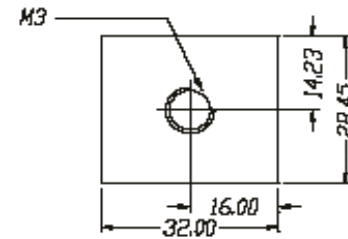
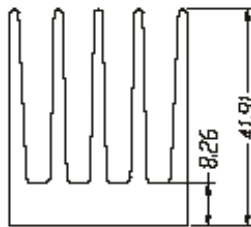
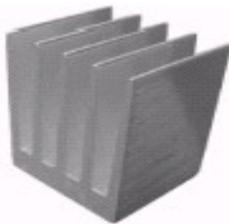
1221A000



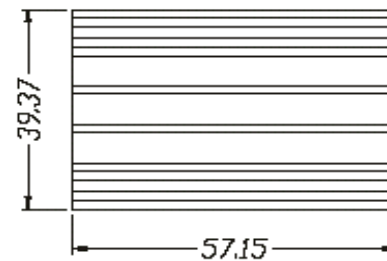
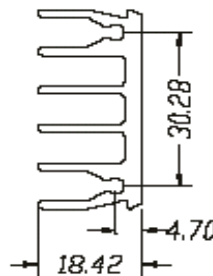
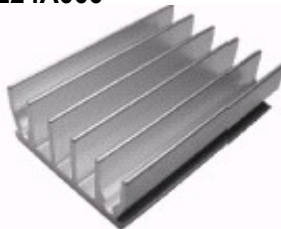
1222A000



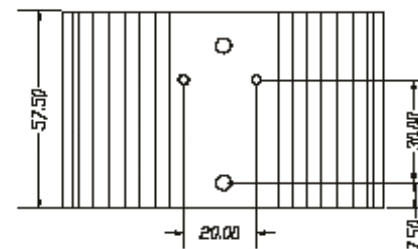
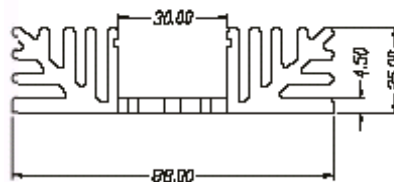
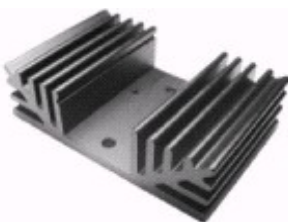
1223A000



1224A000



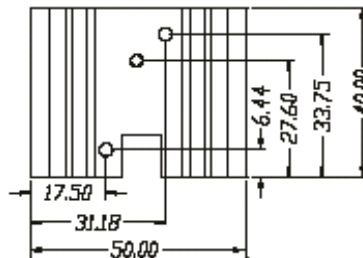
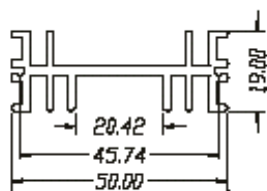
1225A000



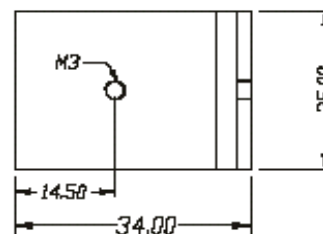
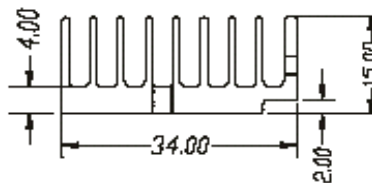
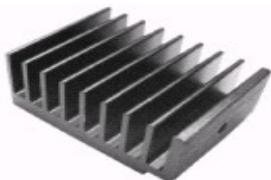
TO-218, 220, 3P EXTRUDED HEATSINK



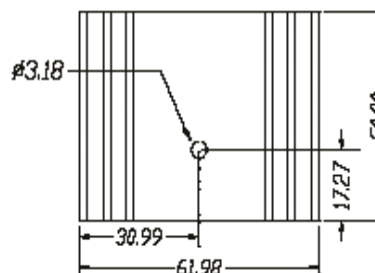
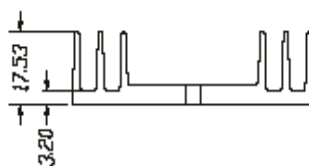
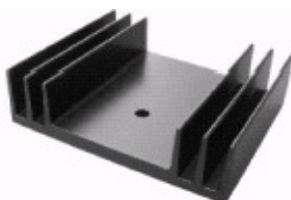
1226A000



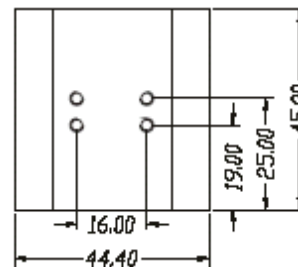
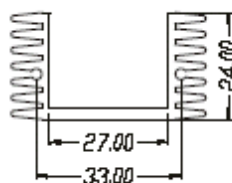
1227A000



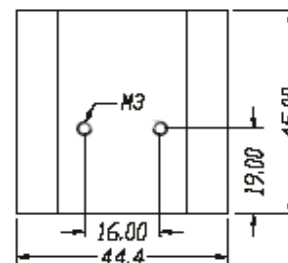
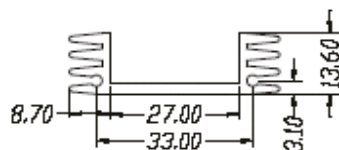
1228A000



1229A000



1230A000



1231A000

